

**1 Bed
Apartment
located in**

KARE
ESTATES

41 Lyell Street
London
E14 0SS

1

1

1

B

£380,000

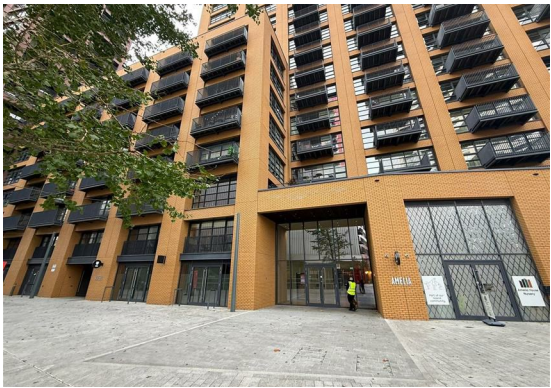
- NHBC warranty
- 24 hour concierge
- Residents Lounge
- Outdoor & Indoor Pool
- Spa & Gym
- Unique Waterside Development

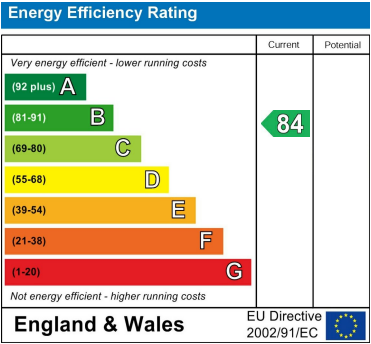
Intelligently laid out open-plan living space with floor-to-ceiling windows providing plenty of natural lights and access to a private balcony overlooking riverside or skyline views. The living space leads into the well-sized sleeping area with a large integrated wardrobe.

Modern and contemporary fitted kitchen which comes fully fitted with premium integrated appliances, A stylish spacious bathroom with a sleek finish, and quality throughout the space. Residents enjoy premium amenities — indoor & outdoor pools, spa, two state-of-the-art residents only gyms, and 24-hour concierge services, landscaped gardens and terrace.

Excellent transport links via the Jubilee Line & DLR at Canning Town, and short walk across the footbridge to the development making commuting a breeze.

Situated on a vibrant riverside estate created by Ballymore, London City Island offers a unique neighbourhood feel with cafés, galleries, grocery store and direct link to the city.





DIRECTIONS

CONTACT

Meridian House 42 Upper Berkeley Street
London
W1 5PW

E: info@kareestates.co.uk

T: 7831847551

kareestates.co.uk

